

Low Location Lighting (LLL) System, Plans & Cases, Architects Pack



LOW LOCATION LIGHTING (LLL) SYSTEM



Decals are supplied in packs of 20 (10 left and 10 right).

Decals are supplied separately to the photoluminescent inserts so that they can be affixed at the most pertinent places along the escape route.



Code: LLLPVC-10

This kit provides sufficient components to provide 10m x 50mm of PVC LLL system.

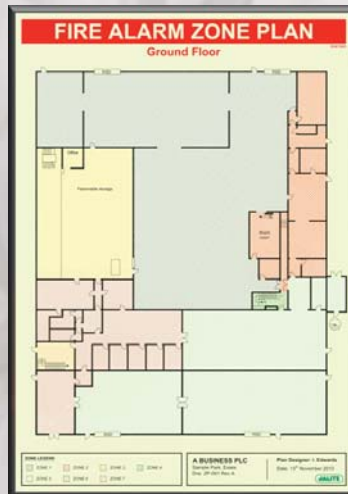
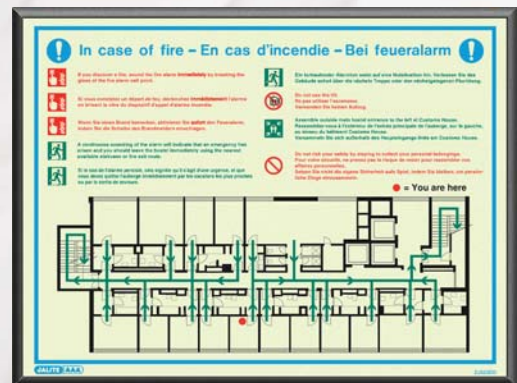
FIRE SAFETY PLANS & FRAMES

Jalite have full in house CAD capabilities to produce plans to individual requirements; with an in depth knowledge and many years experience we are here to help you develop your bespoke plan.

Typical Plans include:

- Escape / Evacuation Plans (BS ISO 23601)
- Fire Alarm Zone Plans
- Fire Action Notice / Plans
- HMO (homes in multiple occupation) - Corridor Plans

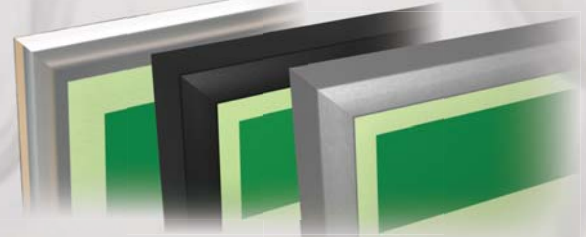
These are just a few of the products / services we offer; please contact us now to discuss your individual requirements.



Chrome Effect Frame:

Economical and presentable solution.

Aluminium Frame: Available in a black or silver finish, offers an architectural and professional solution to housing your fire safety plan. Includes hanging brackets for hassle free installation.



• Chrome Effect • Black Finish • Silver Finish

PHOTOLUMINESCENT EDGE MARKERS



Code: **SBYA900K12**
Kit contains: 12 x 1.2m lengths of photoluminescent aluminium edge markers.

Code: **SBYA900K4**
Kit contains: 4 x 1.2m lengths of photoluminescent aluminium edge markers.

Edge markers illuminate to provide protection & identification of square pillars. Ideal for use in industrial environments i.e. warehouses, factories and car parks.

Easily installed with adhesive or mechanical fix.

